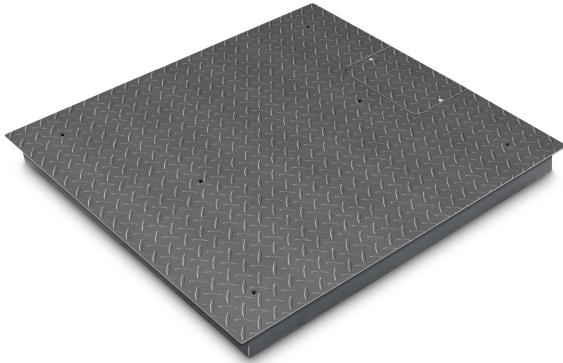


KERN KIP 3000V20LM

KERN

Weighing bridge made of non-slip corrugated steel plate, lacquered



Category

| | |
|------------------|-----------------|
| Brand | KERN |
| Product category | Component |
| Product group | Weighing bridge |
| Product family | KIP-V20-IP67 |

Measuring System

| | |
|--------------------------------|---|
| Weighing system | Strain gauge |
| Weighing capacity [Max] | 3000 kg |
| Readability [d] | 1 kg |
| Resolution | 3.000 |
| Linearity | ± 3 kg |
| Reproducibility | 1 kg |
| Tare range | -3000 kg |
| Minimum weight [Min] | 20 kg |
| Adjustment options | Adjusting with external weight |
| Recommended adjusting weight | 3000 kg (M2) |
| Stabilization time | 2 s |
| Warm-up time | 10 min |
| Eccentric loading at 1/3 [Max] | 5 kg |
| Maximum creep (15 minutes) | 4 kg |
| Maximum creep (30 minutes) | 8 kg |
| Loadcell type | nickel plated steel IP67 silicone-coated + glued on plate |
| Load cell connection | 4-wire |

Approval

| | |
|--|------|
| CE mark | ✓ |
| Verification scale interval [e] | 1 kg |
| Conformity assessment possible ex works | ✓ |

Display

| | |
|---------------------------------|-----------------|
| Display type | LCD |
| Display type | LCD |
| Display backlight | ✓ |
| Display digit height | 25 mm |
| Languages of the user interface | Symbol language |

Construction

| | |
|--|----------------------|
| Dimension (W×D×H) | 1500×1500×108 mm |
| Dimensions weighing platform (W×D×H) | 1500×1500×108 mm |
| Material | steel, lacquered |
| Material display housing | Plastics |
| Material weighing plate | steel, powder-coated |
| Material platform | steel, powder-coated |
| Dimensions weighing surface (W×D) | 1500×1500 mm |
| Cable length | 5 m |
| Display device cable length | 5 m |
| Allowed cable length display device [Max] | 15 m |
| Material load cell(s) | steel |
| Load cells - number | 4 |
| Levelling feet adjustable | ✓ |
| Wall mount | ✓ |

Functions

| | |
|---|-------------------------|
| Number of keys for operation | 4 |
| Auto-off interval(s) in mains power mode | selectable |
| Tare function | manual (single & multi) |
| Underfloor weighing | None |
| IP protection - load cell | IP67 |
| IP protection - platform | no IP protection |

Power Supply

| | |
|---------------------------|--|
| Plug-in power supply type | Power adapter |
| Supplied power supply | Power supply & battery function (battery not included) |

Environmental conditions

| | |
|-------------------------------|--------|
| Humidity of environment [Min] | 0 % |
| Humidity of environment [Max] | 80 % |
| Ambient temperature [Min] | -10 °C |
| Ambient temperature [Max] | 40 °C |

KERN KIP 3000V20LM



Weighing bridge made of non-slip corrugated steel plate, lacquered

Packing & Shipping

| | |
|------------------------------|------------------|
| Readability force [d] (N) | 2 d |
| Dimensions packaging (W×D×H) | 1550×1550×265 mm |
| Net weight | 180 kg |
| Shipping method | Freight |
| Net weight approx. | 180 kg |
| Gross weight approx. | 200 kg |
| Shipping weight | 200 kg |

Services (optional)

| | |
|---|---------|
| Article number for adjustment at the location of installation | 961-252 |
| Article number for conformity assessment | 965-230 |
| Article number for DAkkS calibration | 963-130 |
| Article number for certificate of conformity (verification) | 969-517 |

Pictograms

STANDARD



FACTORY

